

Installation and user guide for E20 Apk Calibration.

This user manual is to guide the personnel of Service Center to operate the Apk Calibration for E20

Calibration apk is needed to perform calibration of hardware components including Accelerometer, Light sensor and Proximity Sensor on E20 devices.

This manual will describe the operation steps of calibration in sequence of Accelerometer, Light sensor and Proximity Sensor.

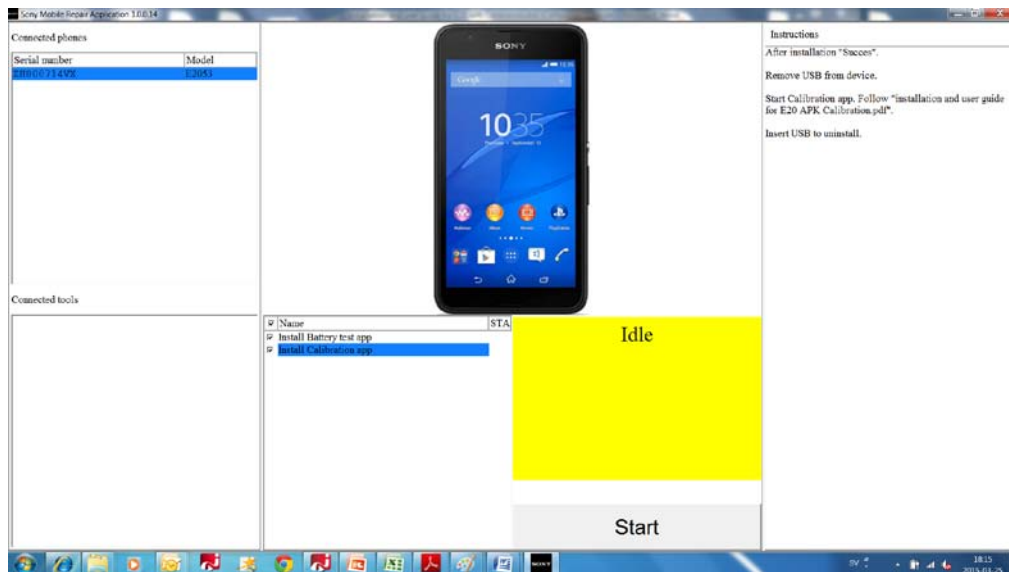
Contents

1	Operations.....	3
1.1	Install APK.....	3
1.2	Accelerometer	5
1.3	Ambient Light Sensor	8
1.4	Proximity Sensor	11
1.5	Uninstall APK.	15
1.6	Disable debug mode.	16

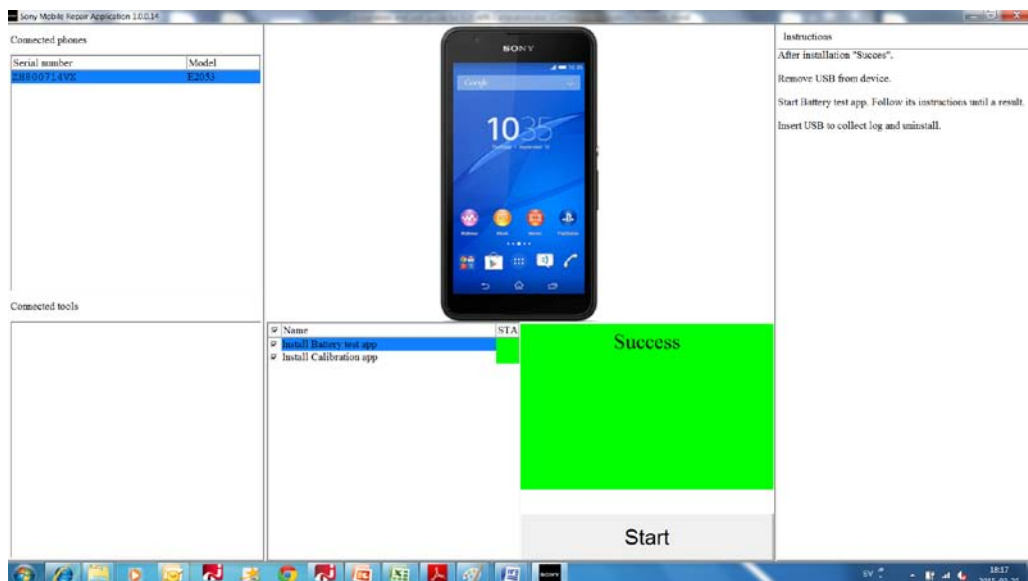
1 Operations

1.1 Install APK

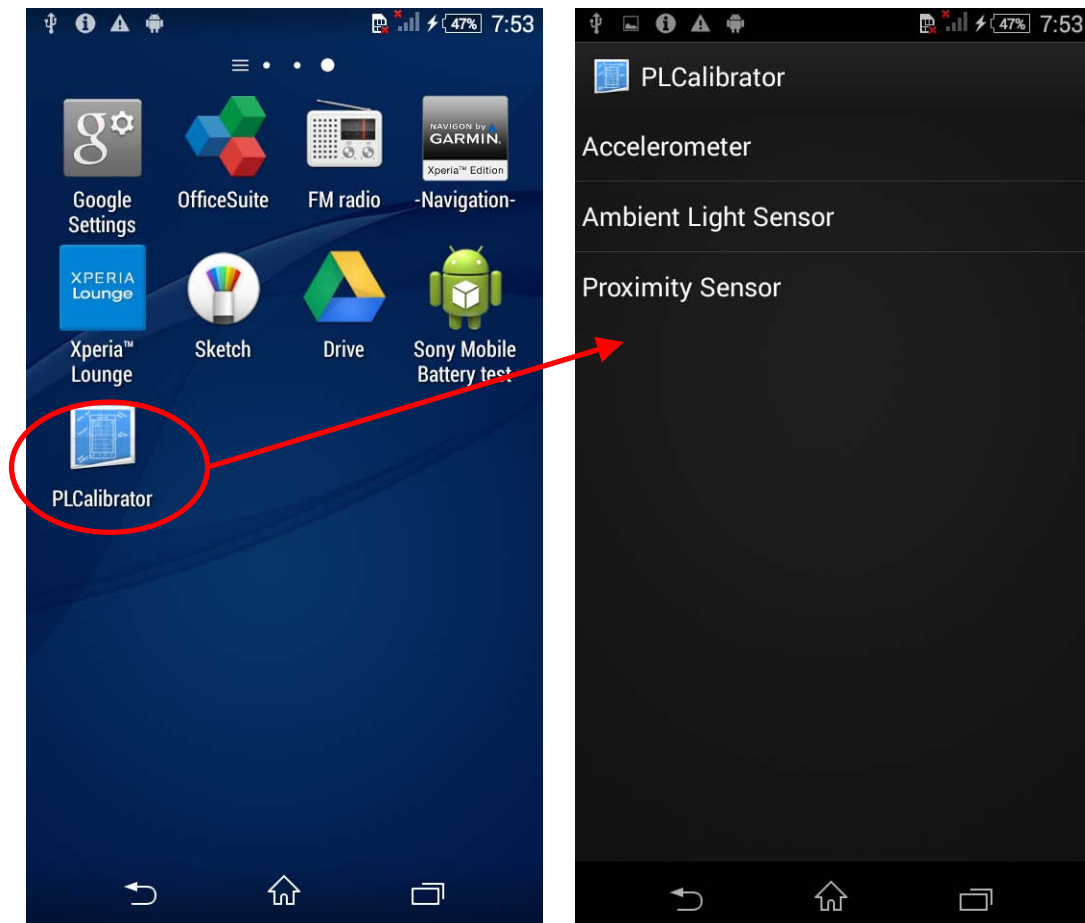
Enable USB debug mode in phone and connect to Sony Mobile Repair Application



Press **Start** to install Calibration app.
When Success installation, then remove USB from device.

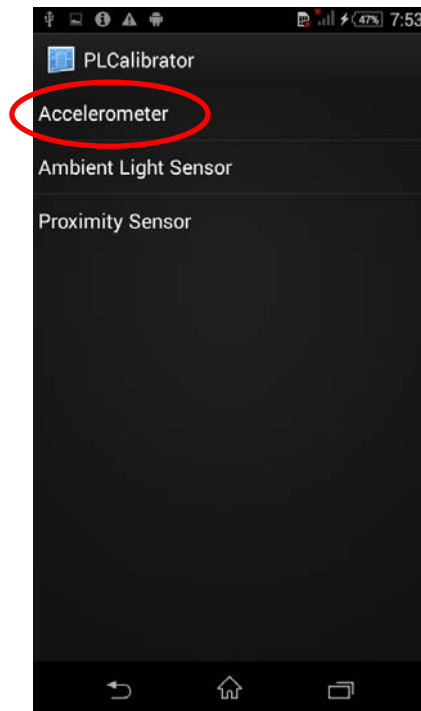


Press PLCalibrator to enter Calibration menu.

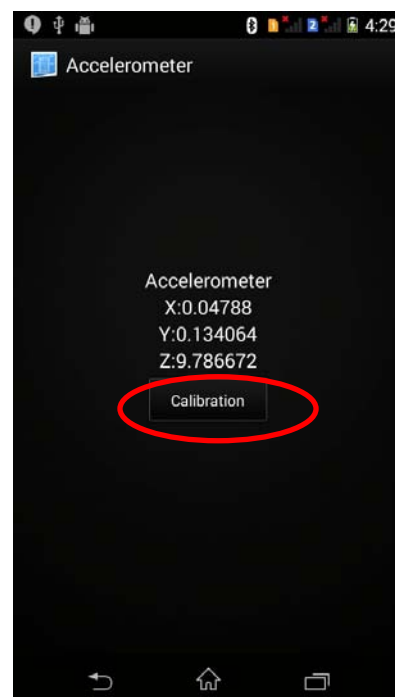


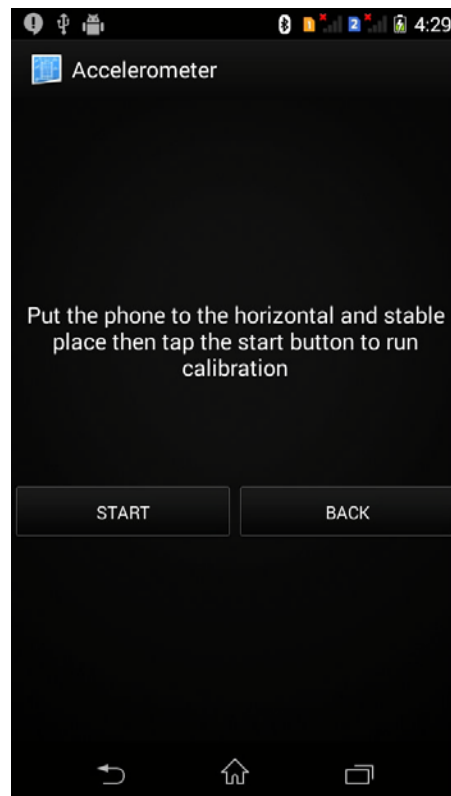
1.2 Accelerometer

- (1) Select "Accelerometer" item in calibration main menu to enter the main page of Accelerometer calibration.



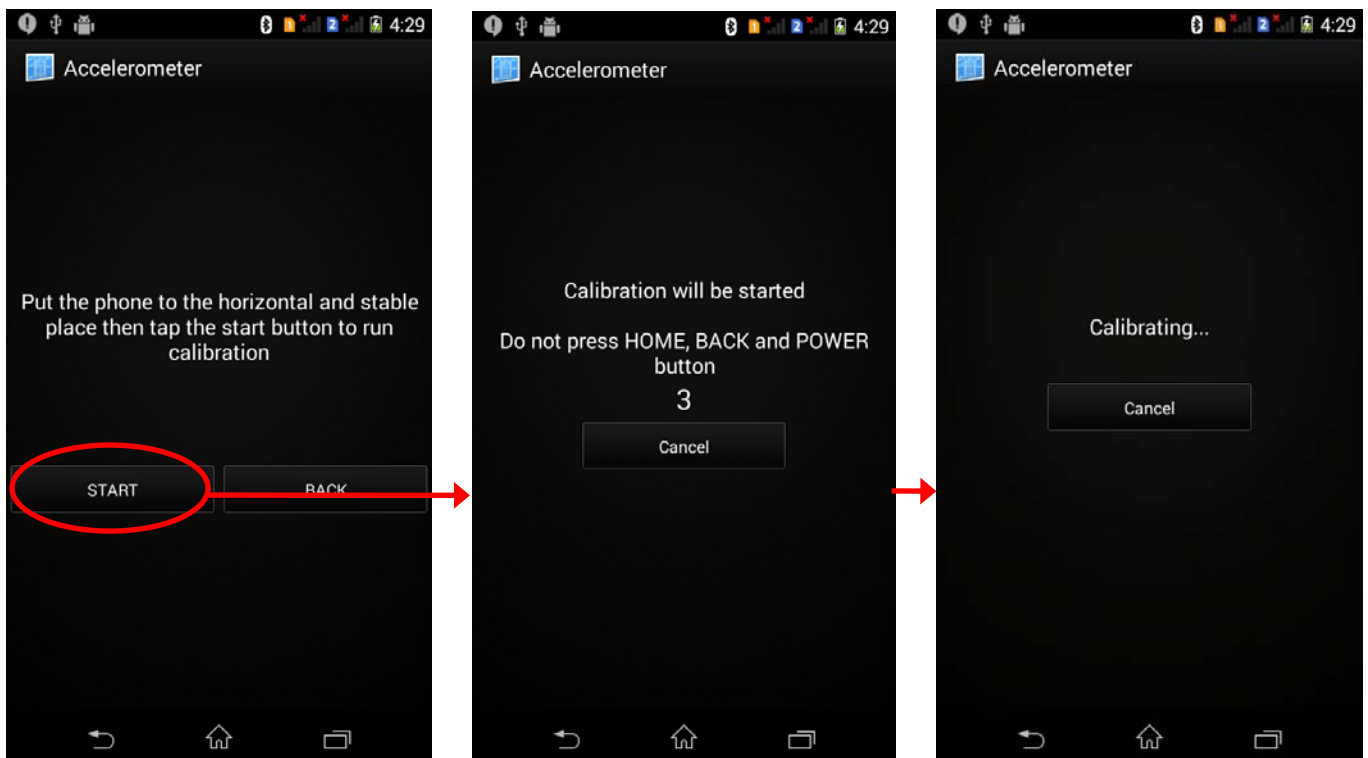
- (2) Press button "Calibration" to enter the confirmation page.



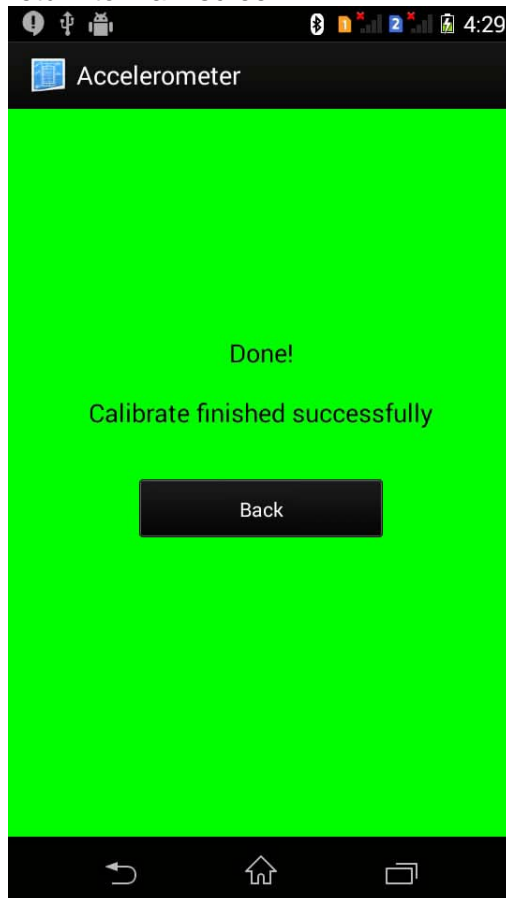


(3) Place the device on stable and horizontal flat plane (e.g. table).

(4) Press button "Start" and the calibration process will start after 3 seconds countdown. Please do not move the device during the calibration procedure.

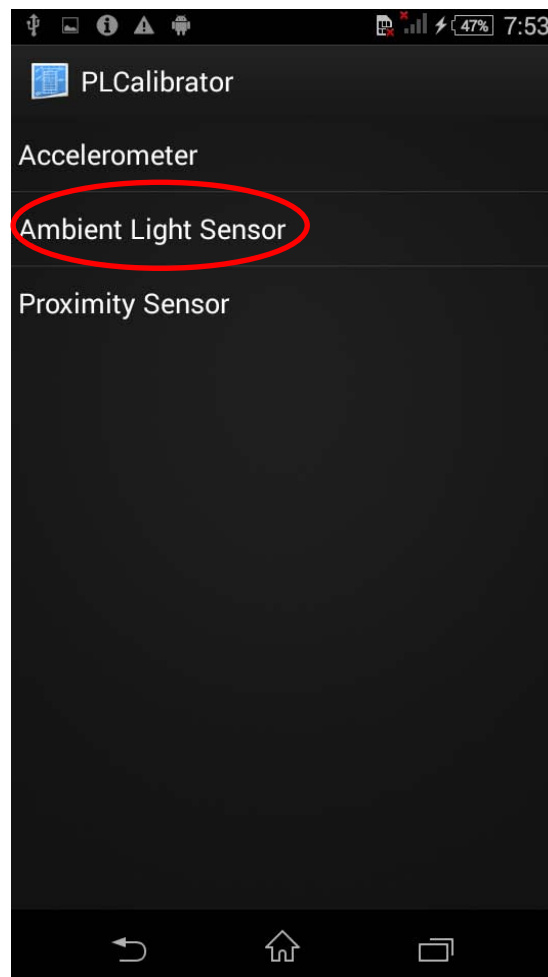


(5) As calibration completed, the result screen will be presented. Press button “Back” to return to main screen.

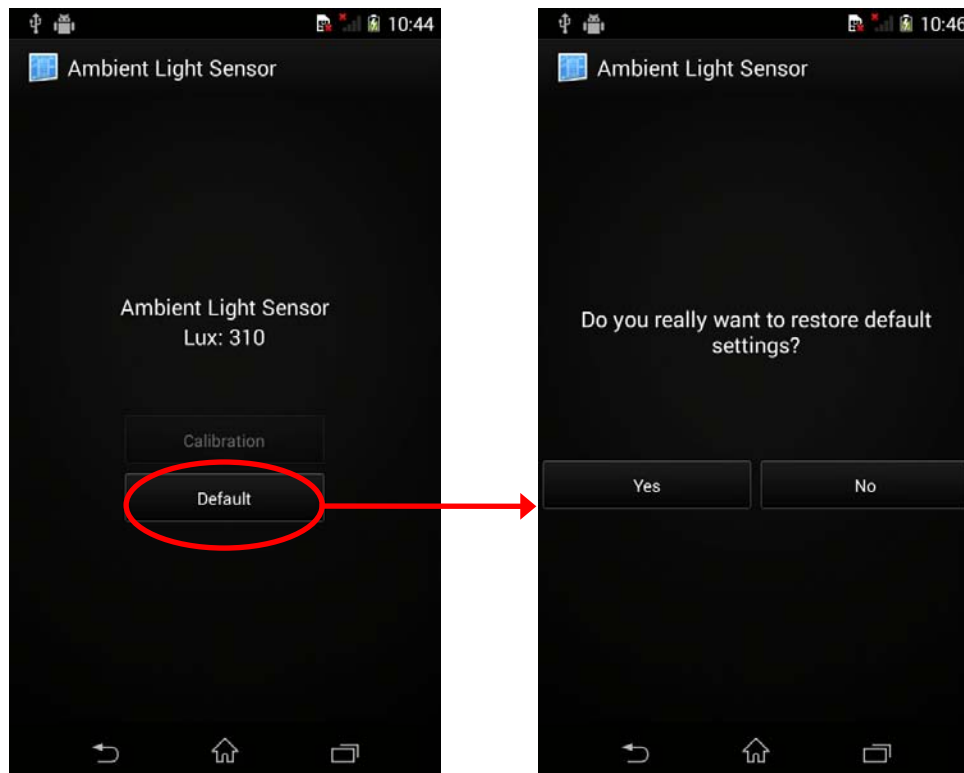


1.3 Ambient Light Sensor

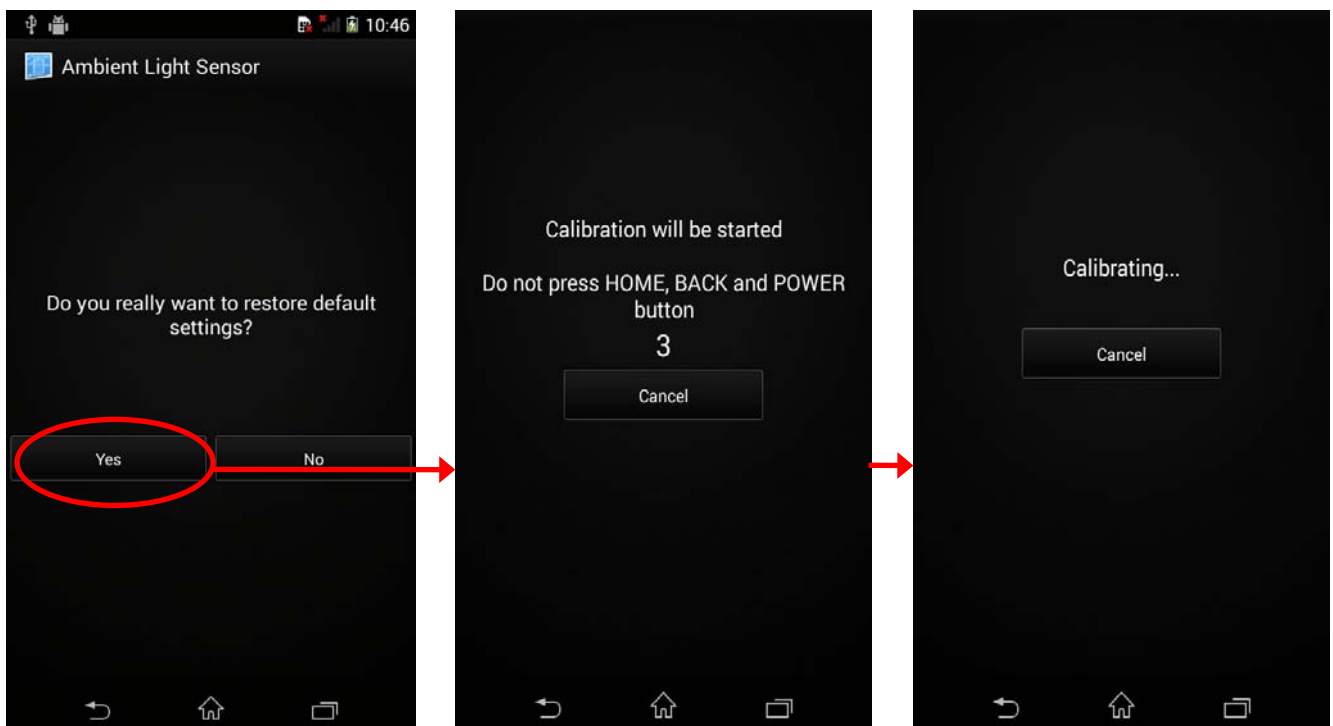
- (1) Select “Ambient Light Sensor” item in calibration main menu to enter the main page of Light Sensor calibration.



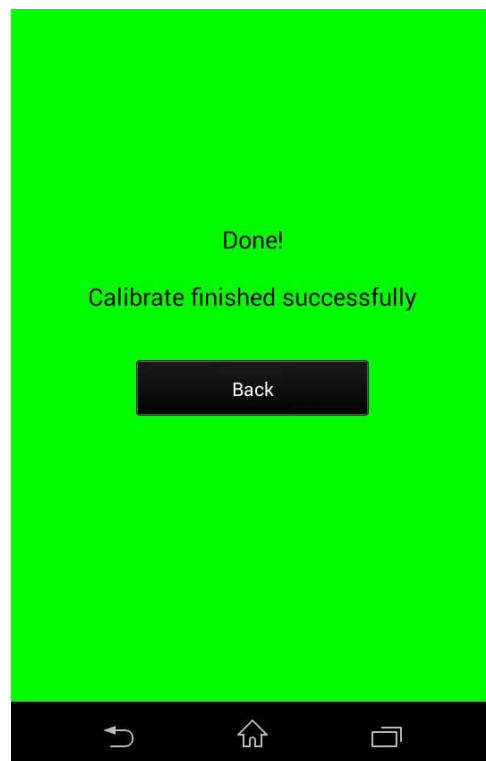
(2) Press button "Default" to enter the confirmation page of calibration reset.



(3) In the confirmation page, press button "Yes" and the calibration reset process will start after 3 seconds countdown



- (4) As calibration completed, the result screen will be presented. Press button “Back” to return to main screen.

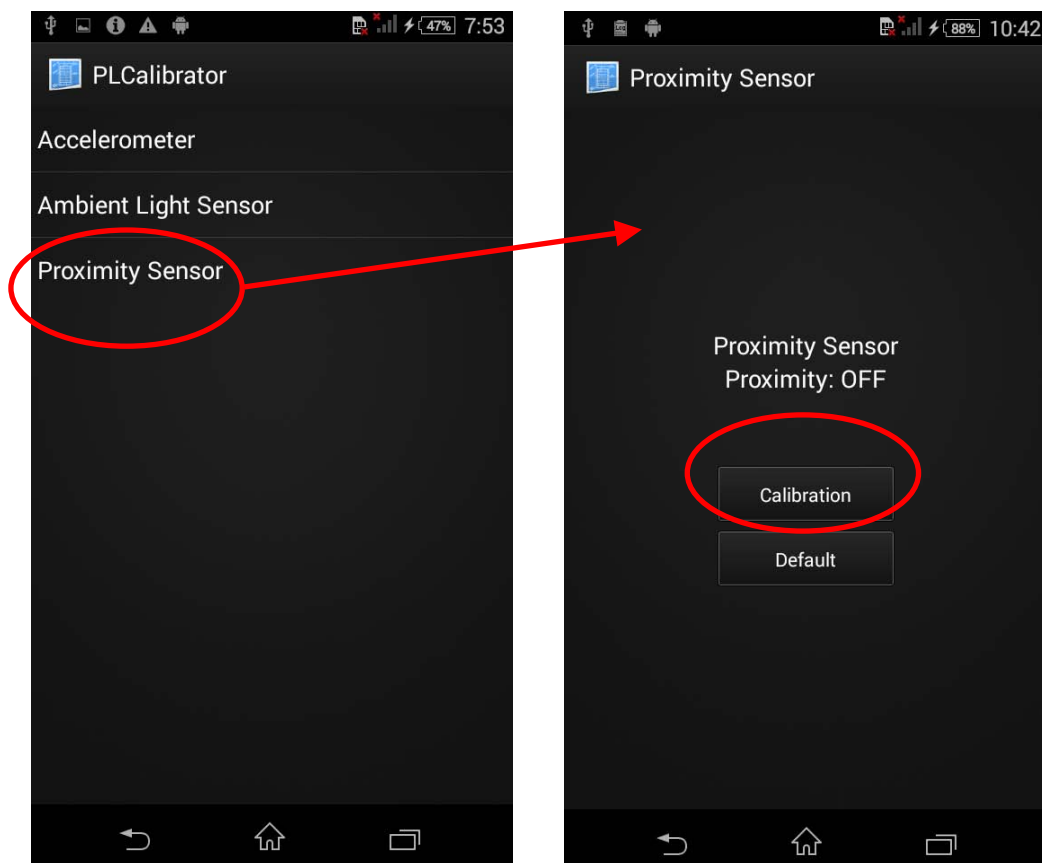


1.4 Proximity Sensor

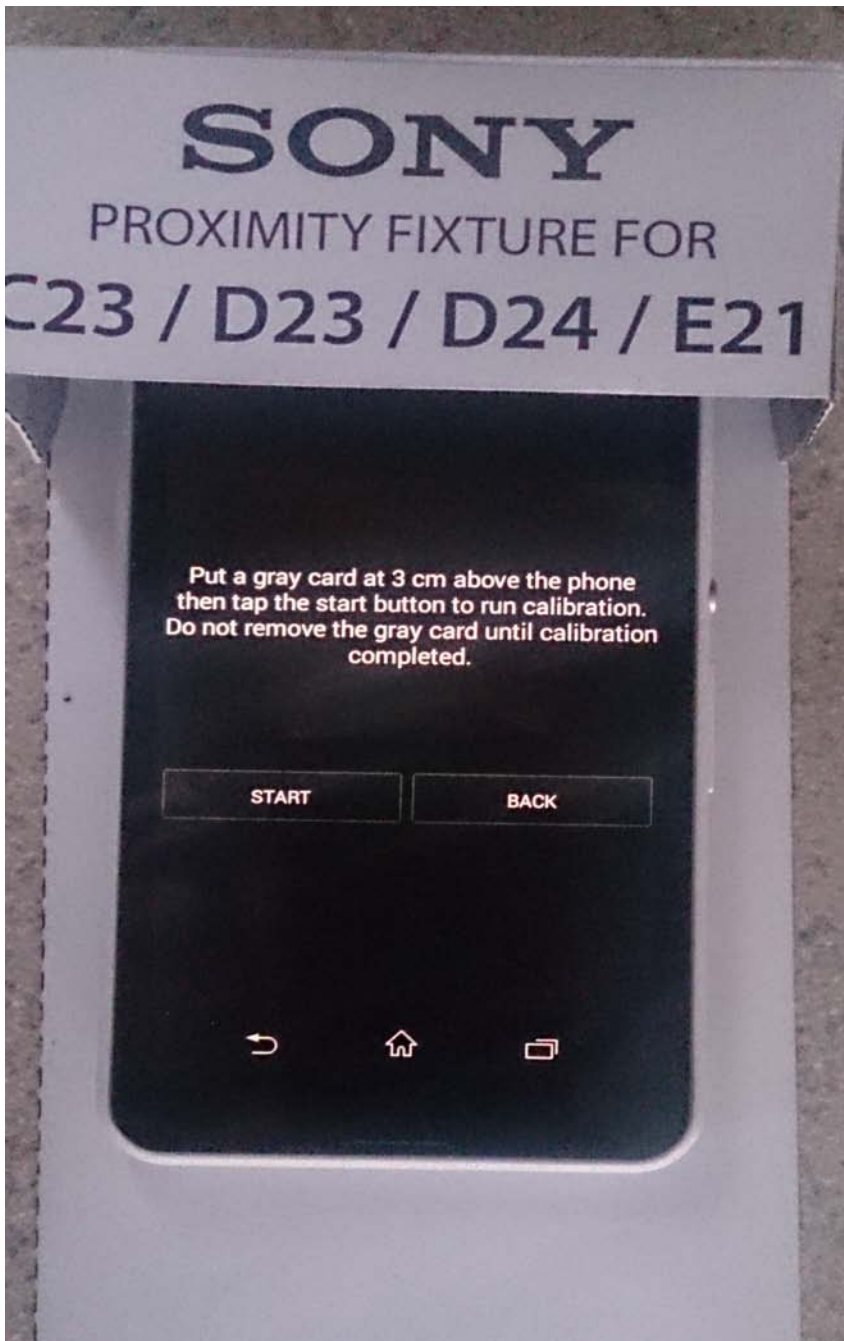
- (1) Prepare a Proximity fixture C23/D23/D24/E2x to cover the Proximity sensor by the distance of 3 cm above the device. (see below pictures for illustration)



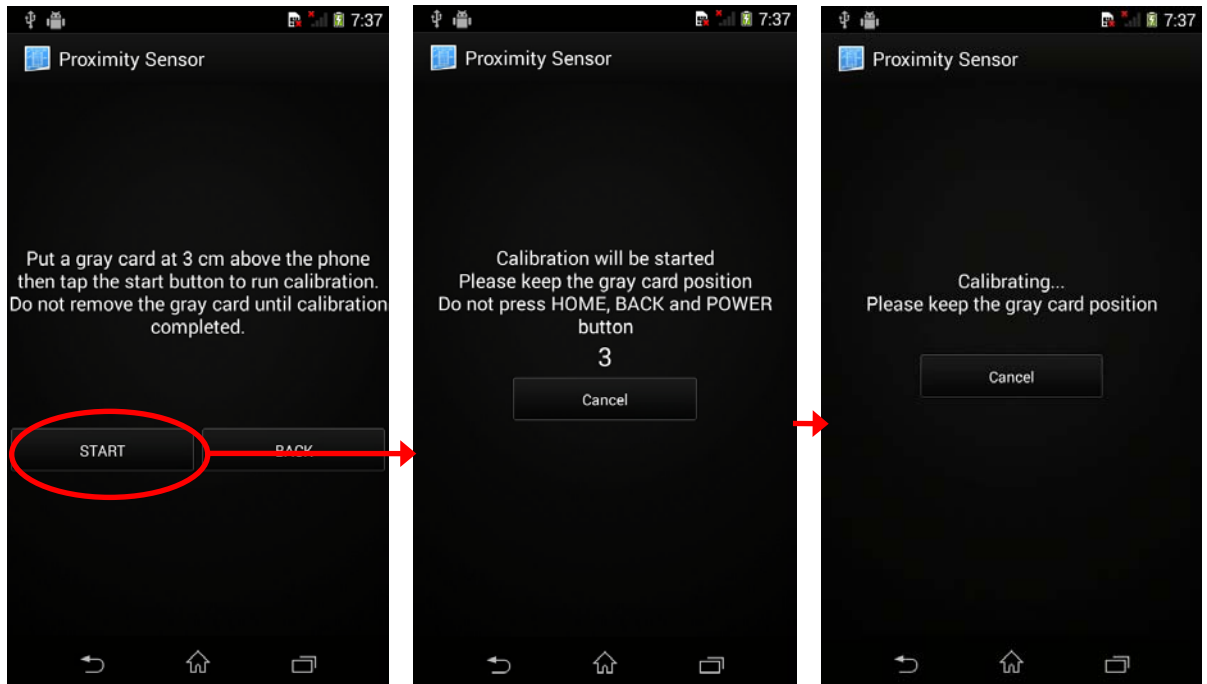
- (2) Select "Proximity Sensor" item in calibration main menu to enter the page of Proximity Sensor.
- (3) Press button "Calibration" to enter the confirmation page of the first stage calibration.



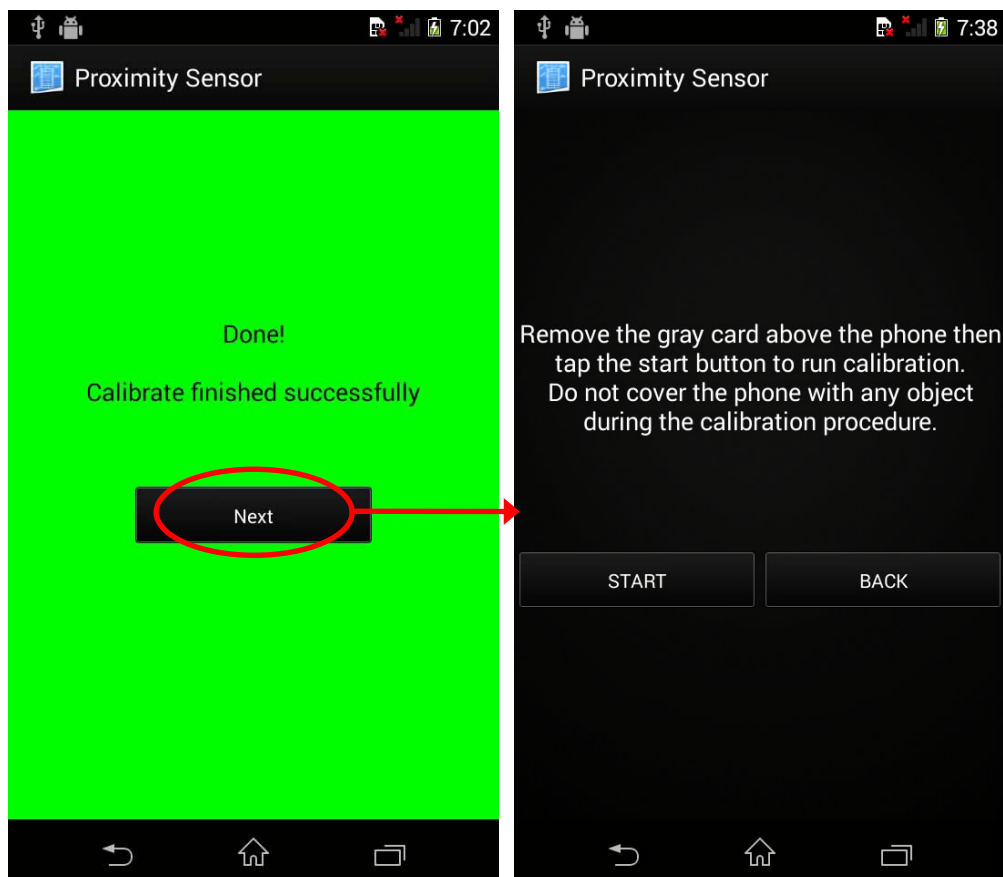
(4) Place phone in Proximity fixture.



(5) Press button “Start” and the calibration process will start after 3 seconds countdown. Please keep units in proximity fixture during the calibration procedure.

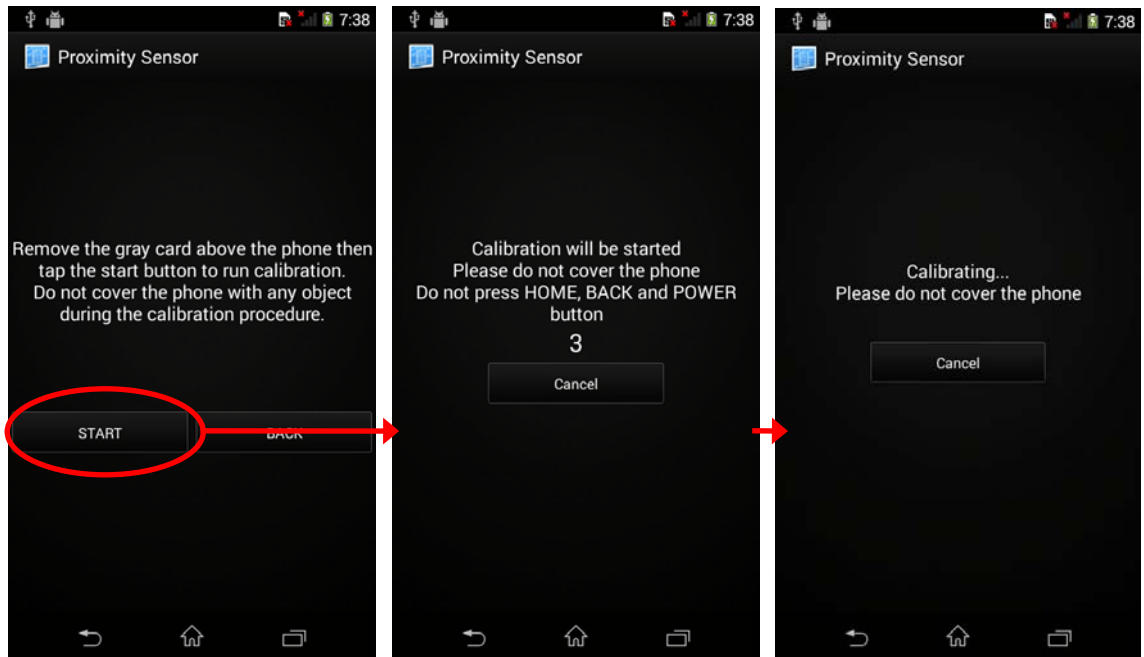


(6) As calibration completed, the result screen will be presented. Press button “Next” to continue the next calibration stage.

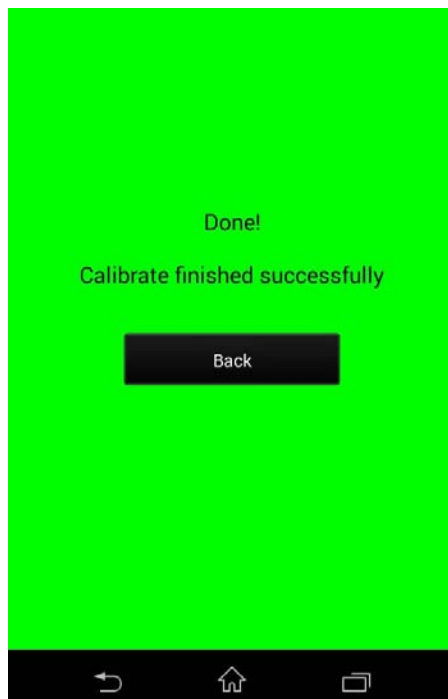


(7) Please remove the device from proximity fixture.

(8) Press button “Start” and the calibration process will start after 3 seconds countdown. Please keep clear above the device with no object covering during the calibration procedure.

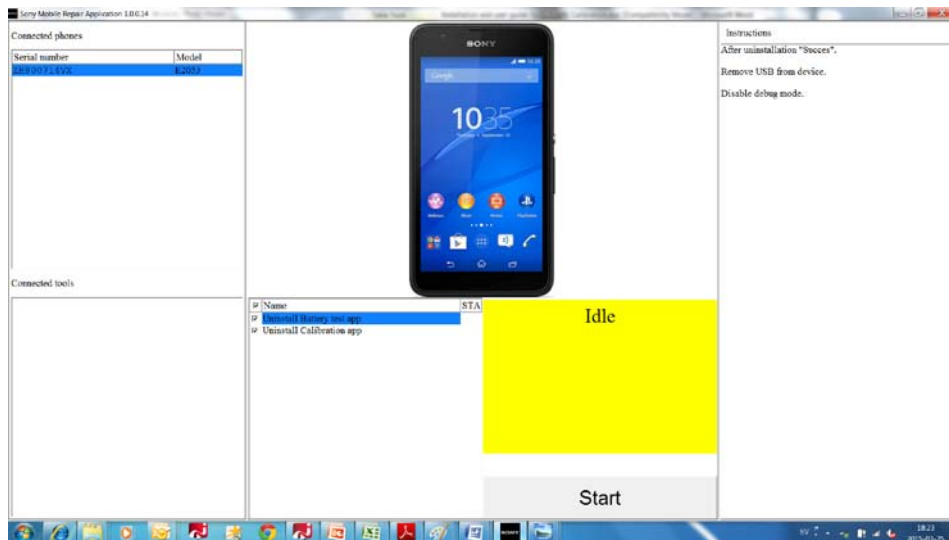


(9) As calibration completed, the result screen will be presented. Press button “Back” to return to main page.

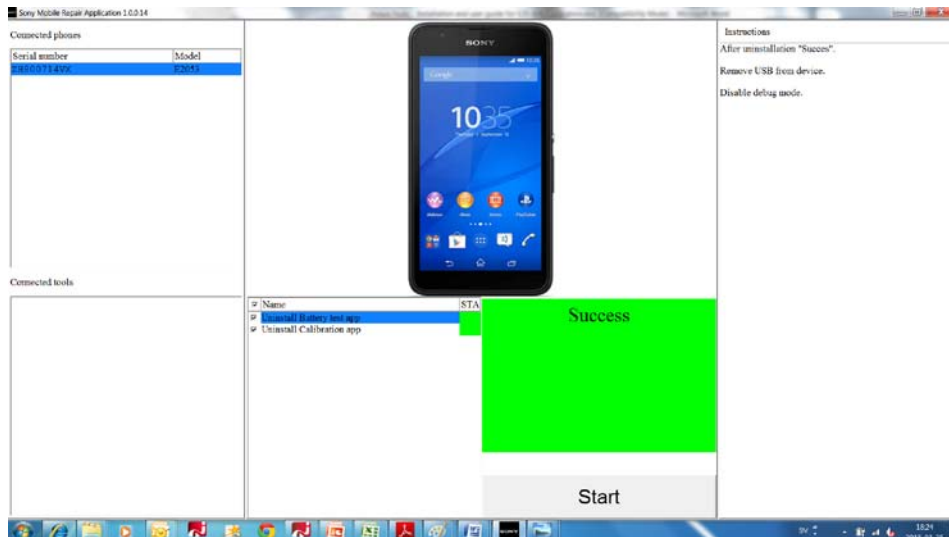


1.5 Uninstall APK.

After calibration connect phone to Sony Mobile Repair Application.



Press **Start** to Uninstall Calibration app.
When Success Uninstallation, then remove USB from device.



1.6 **Disable debug mode.**

Remember to disable debug mode in phone.